



# COMUNE DI MONTE ARGENTARIO

(PROVINCIA DI GROSSETO)

## COMPLETAMENTO CIMITERO DI PORTO ERCOLE

COMMITTENTE : Amministrazione Comunale



### TIPOLOGIE EDILIZIE

SCALA TAVOLA

1:200

7

I PROGETTISTI :

Dott. Ing. Oreste Egidi

Via E. Berlinguer 1 int. 24 - 58011 Capalbio Scalo (GR)

C.F. : GDE RST 55T12 G088R

Dott. Arch. Cecilia Luzzetti

Via Gorizia 7 58100 Grosseto

C.F. : LZZCCL59D67E202G

COLLABORATORI :

Dott. Arch. Andrea Marchi

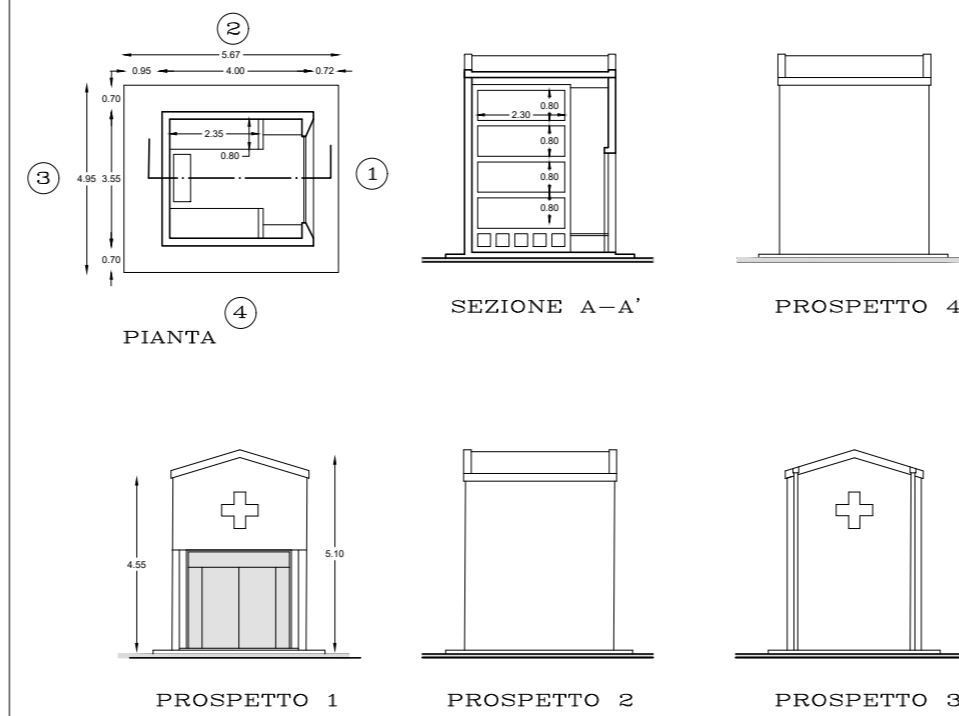
Geom. Alessio Ciavattini

DATA Novembre 2023

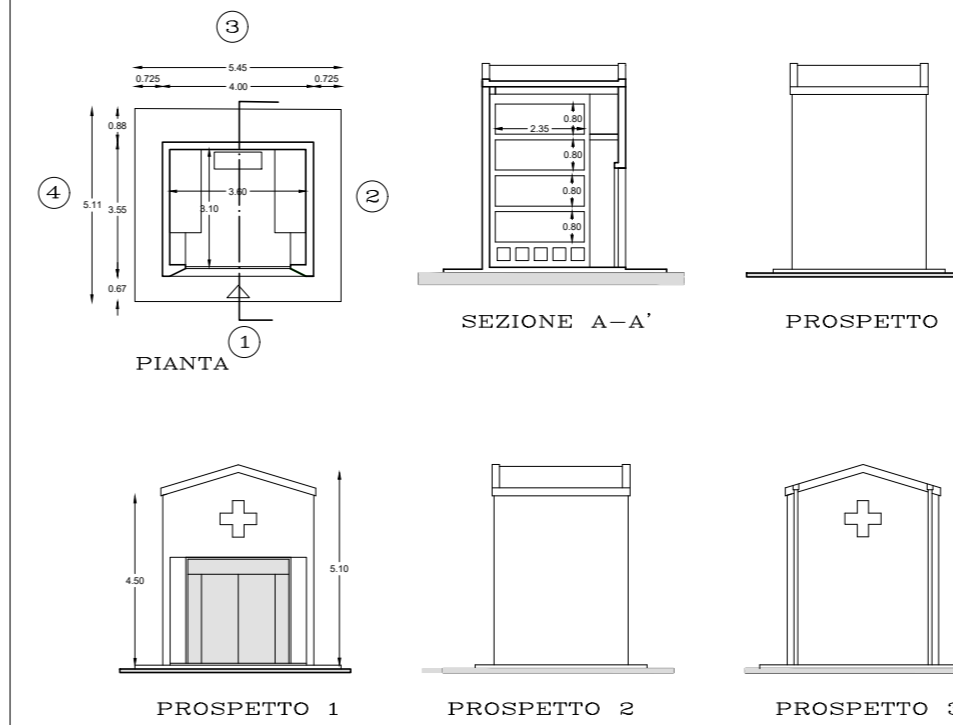
AGG. Settembre 2024

FILE

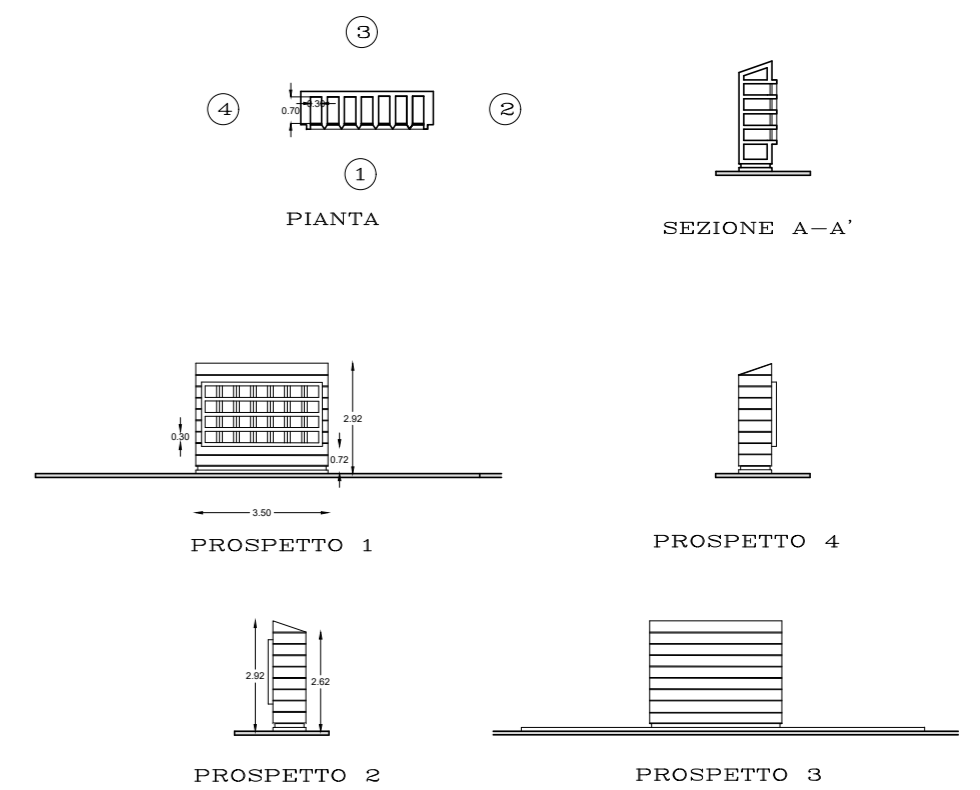
### CAPPELLA TIPO 1



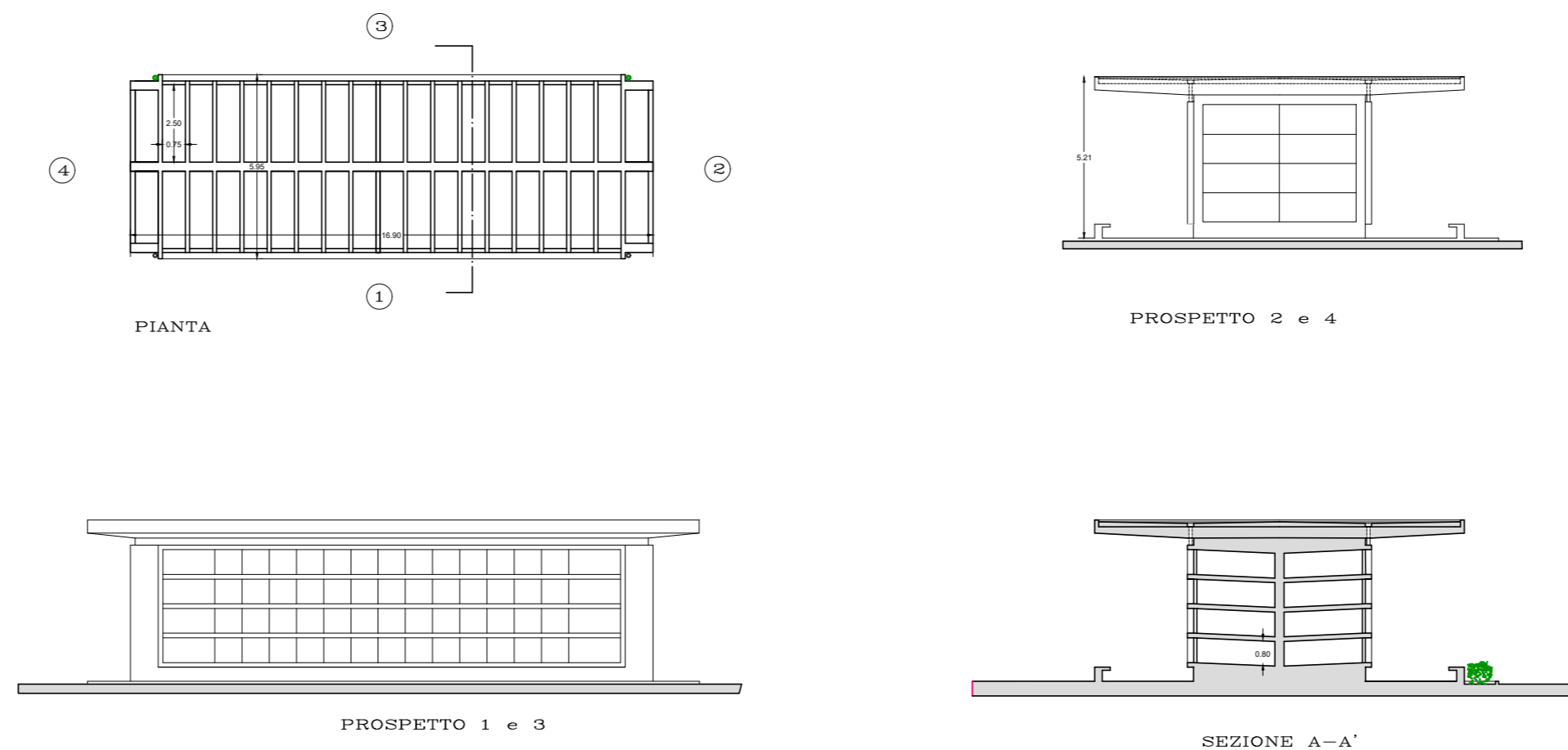
### CAPPELLA TIPO 2



### COLOMBARI



### LOCULI



### TOMBE A TERRA

