

# COMUNE DI MONTE ARGENTARIO

(PROVINCIA DI GROSSETO)

## PIANO DI UTILIZZAZIONE delle Aree Demaniali

### Area Costiera del COMUNE DI MONTE ARGENTARIO

TAVOLA: ARENILI ( Ambito -D- )

N°11

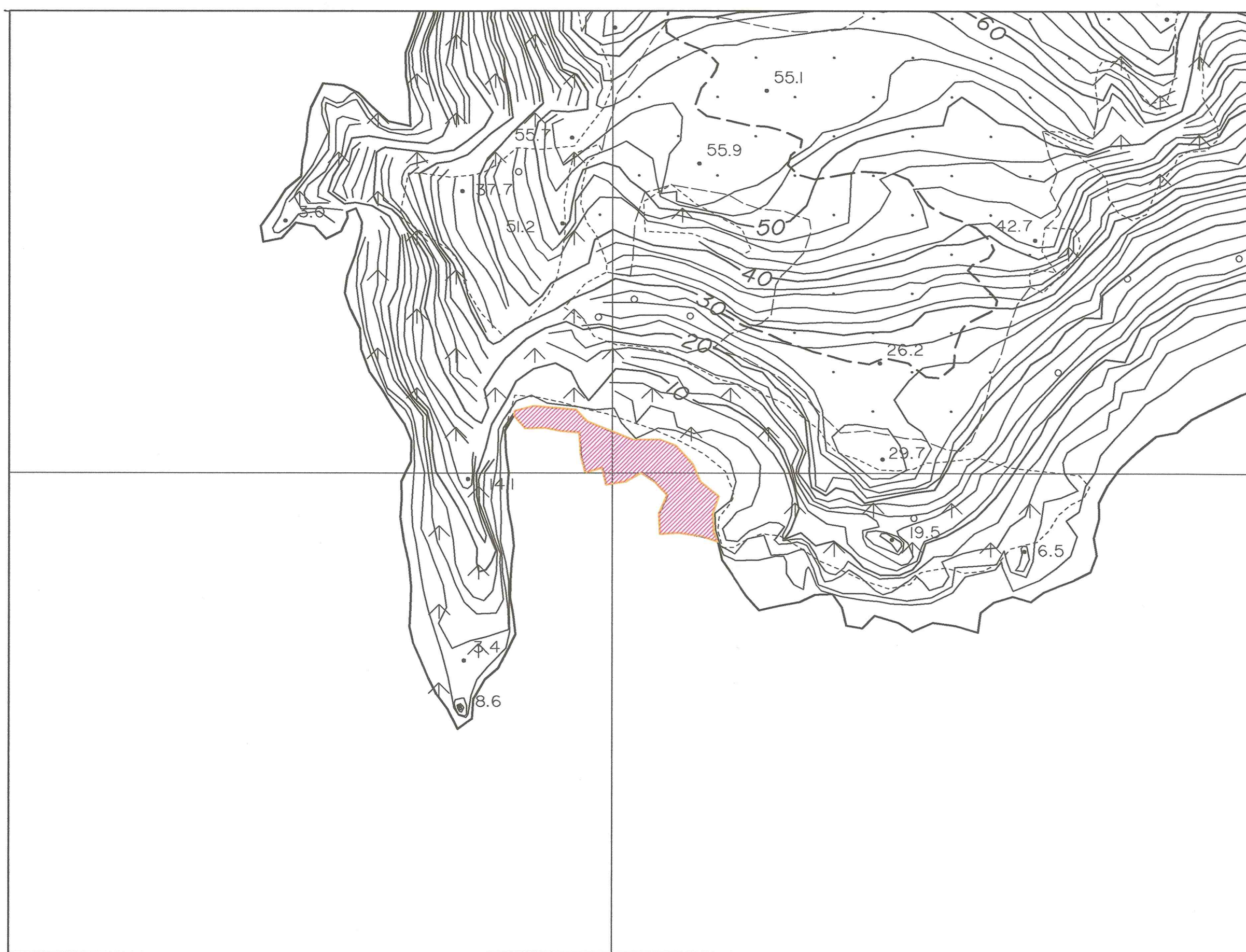
Progettisti : Dott. Arch. Augusto Donati  
Dott. Arch. Lorenzo Mugnai  
Geom. *Luigi Dinetti*

Collaboratori : Dott. Arch. Lara Faenzi  
Dott. Arch. Antonella Sabato

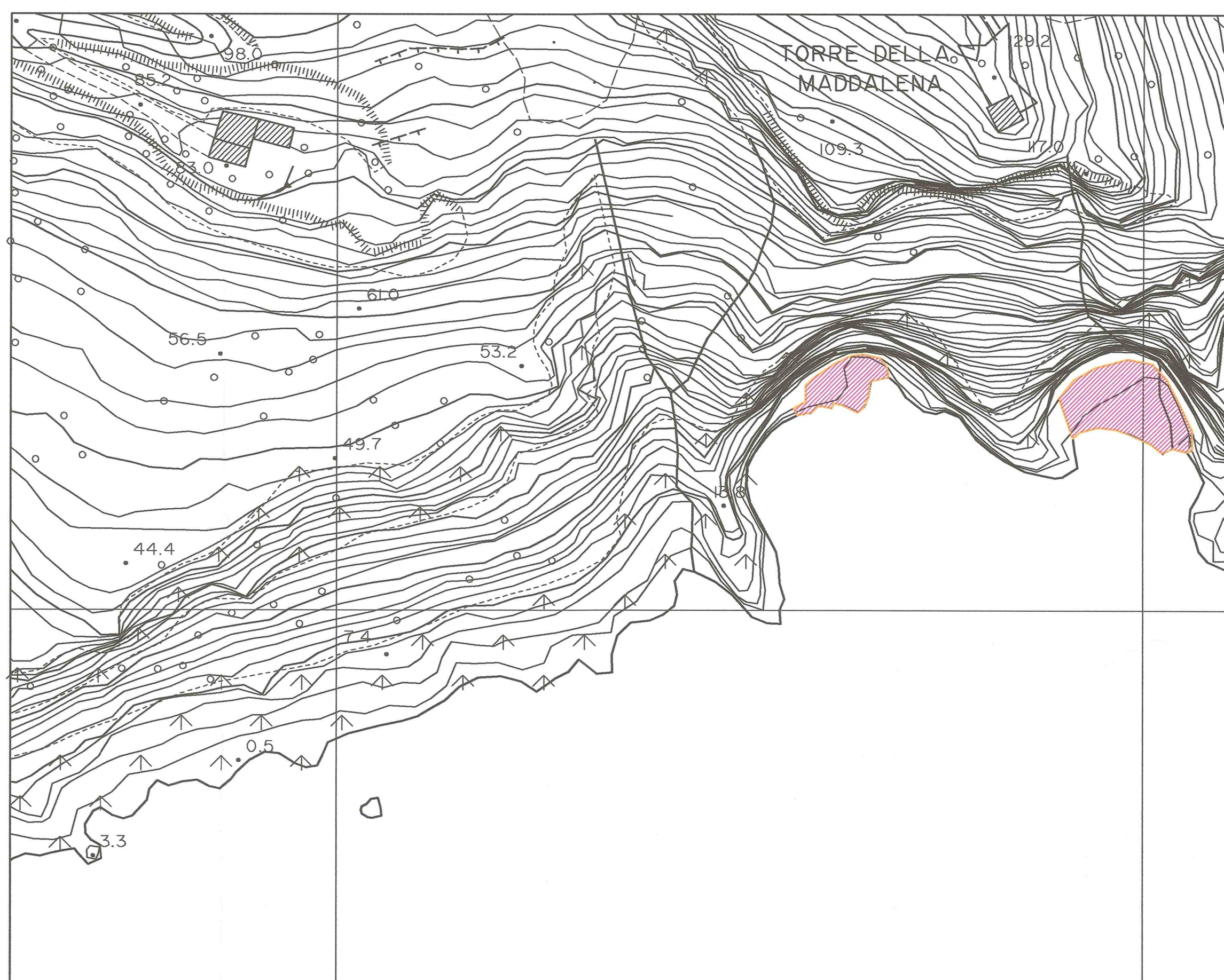
Committente : Comune di Monte Argentario  
Monte Argentario  
11 Marzo 2003

#### LEGENDA

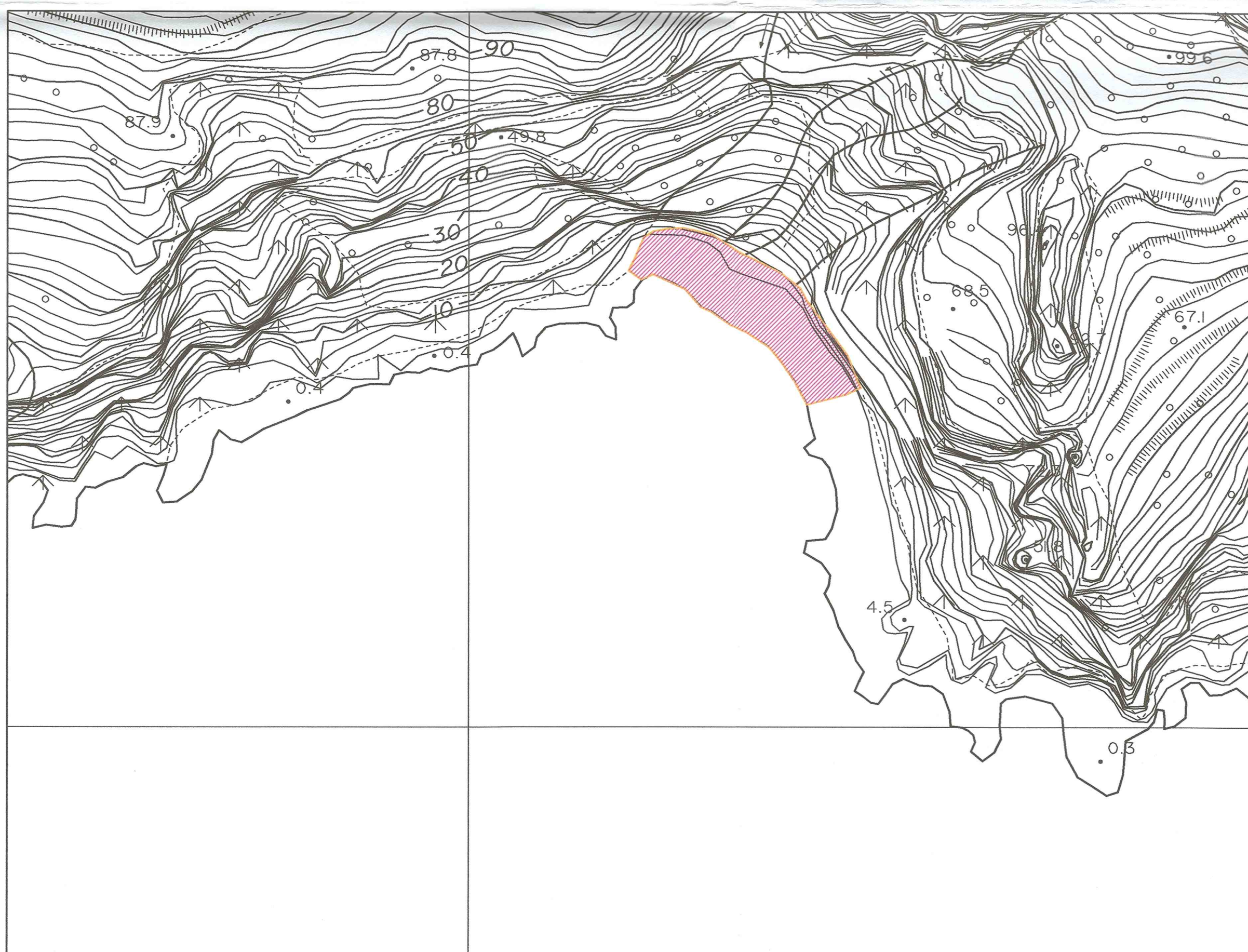
- Arenile in cui non sono ammesse nuove concessioni demaniali
- Arenile in cui sono ammesse nuove concessioni demaniali
- Limite Arenile



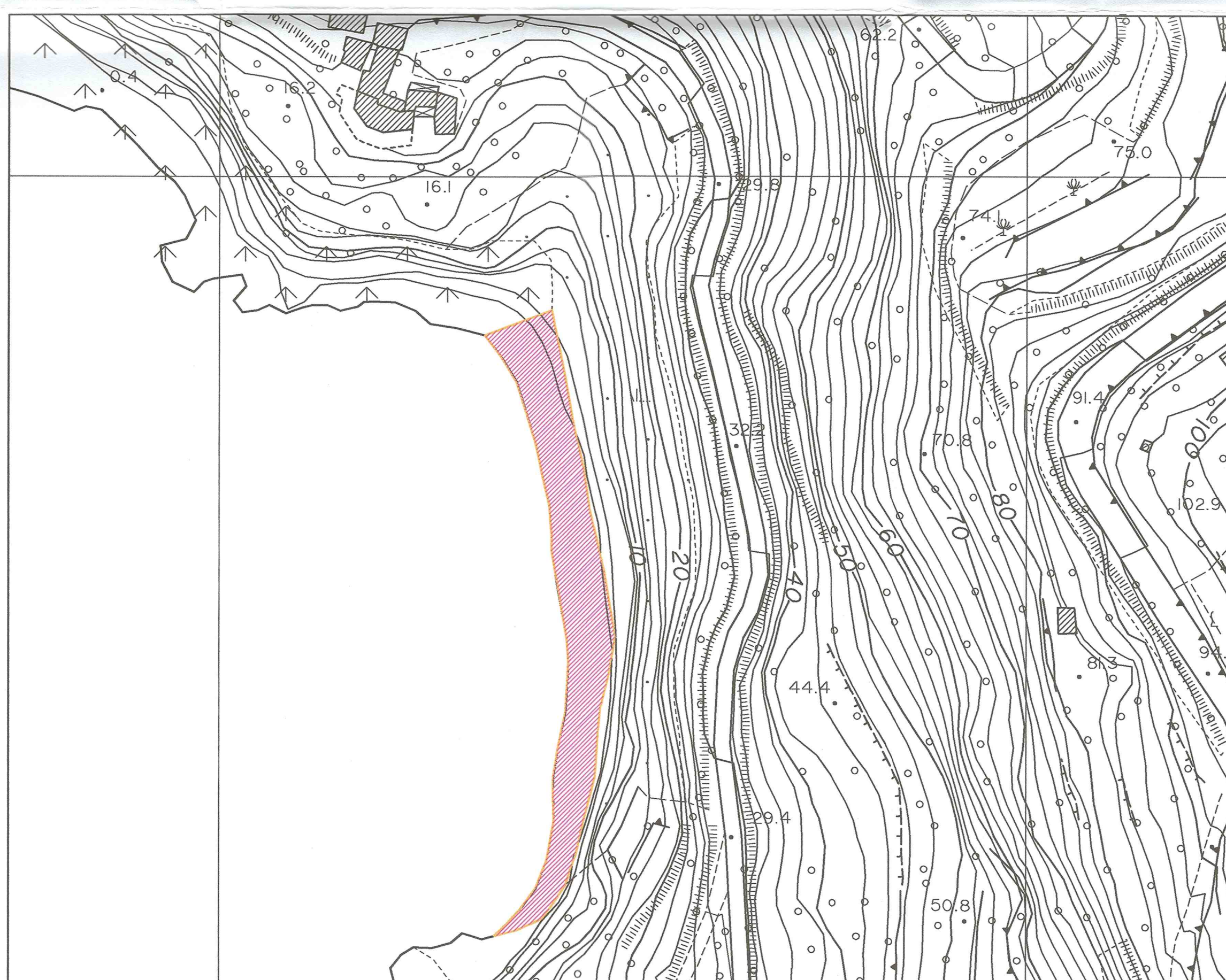
Spiaggia 18 - Capo d'uomo



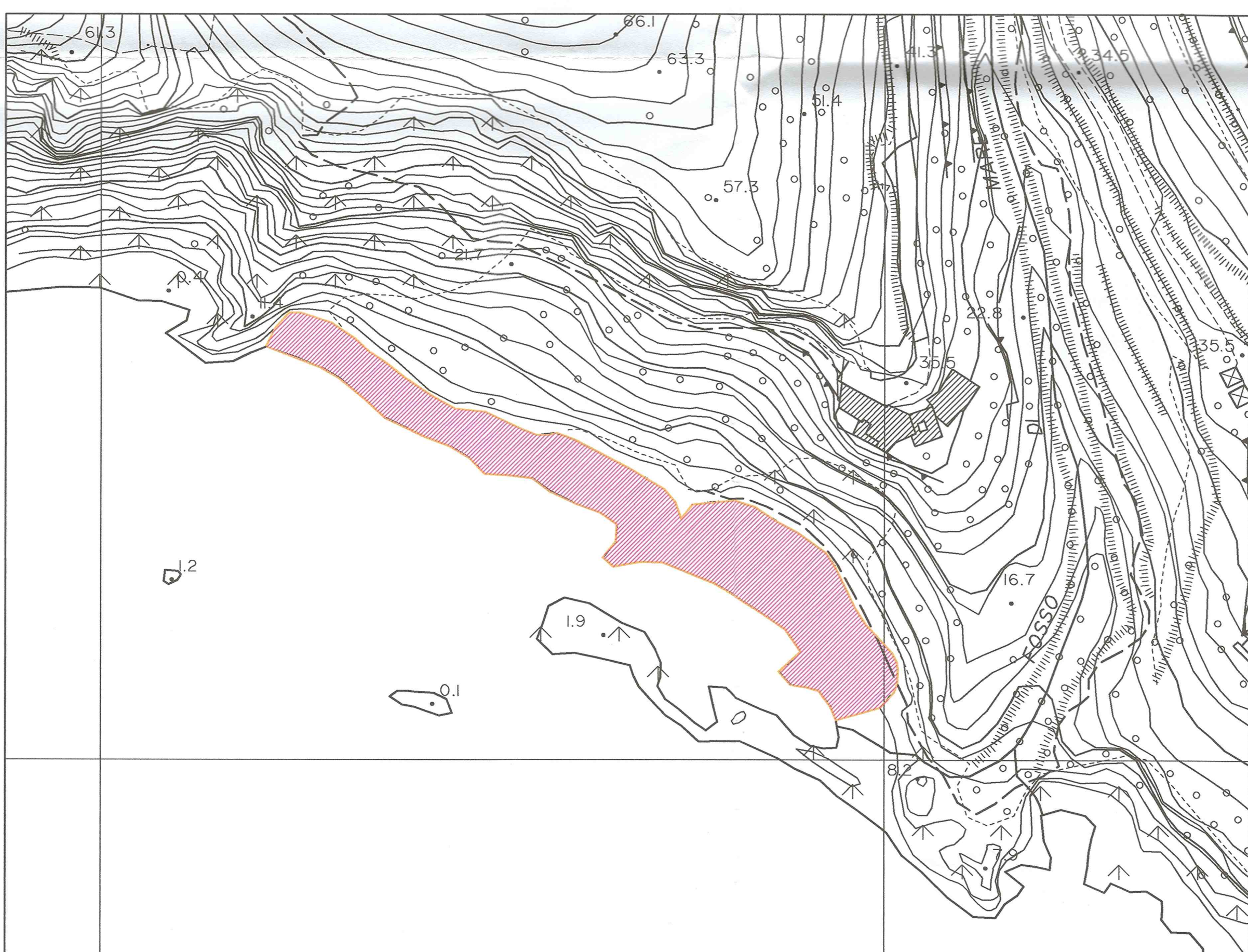
Spiaggia 19 - Maddalena  
Spiaggia 19b - Acqua Appesa



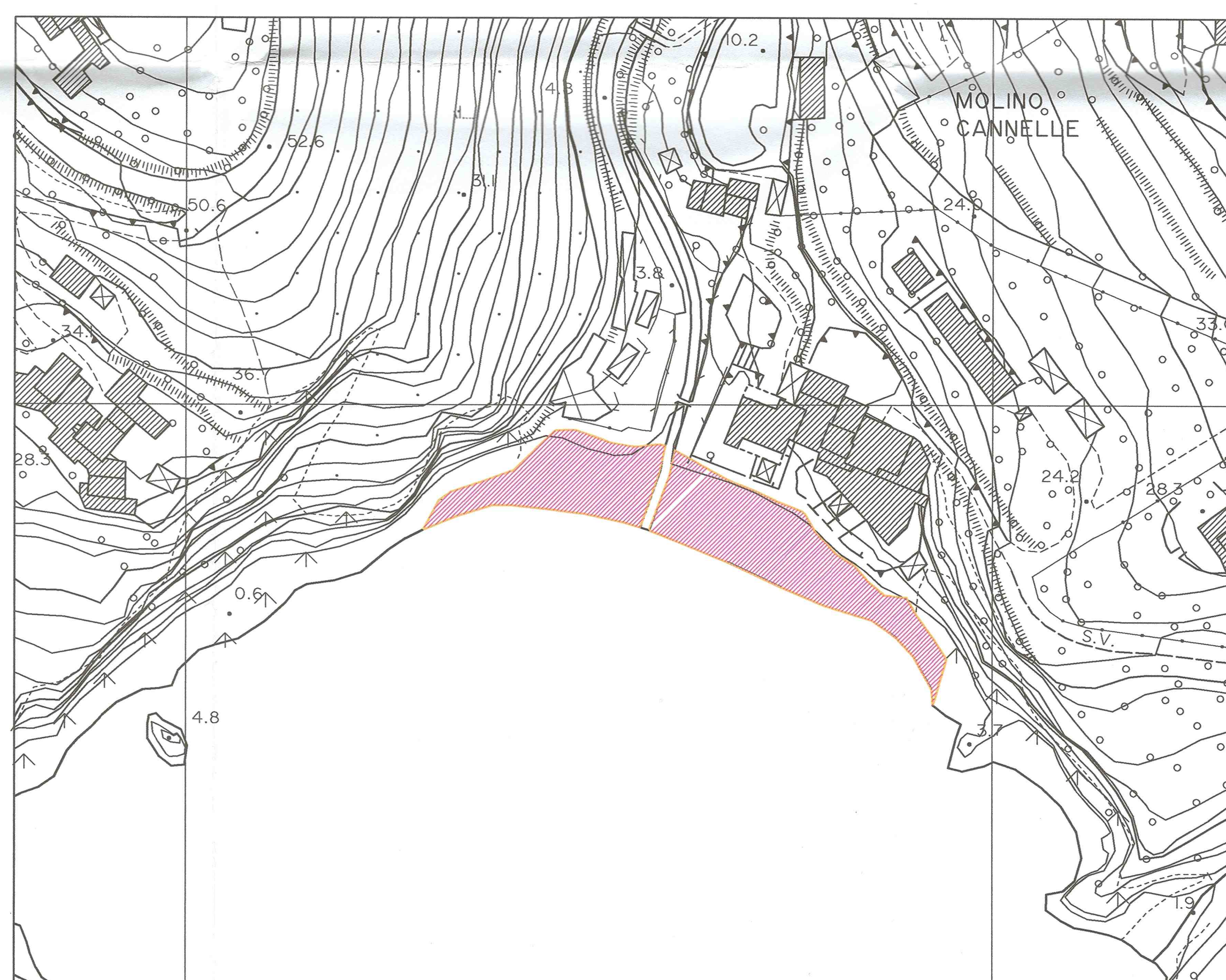
Spiaggia 20 - Cala dell'olio



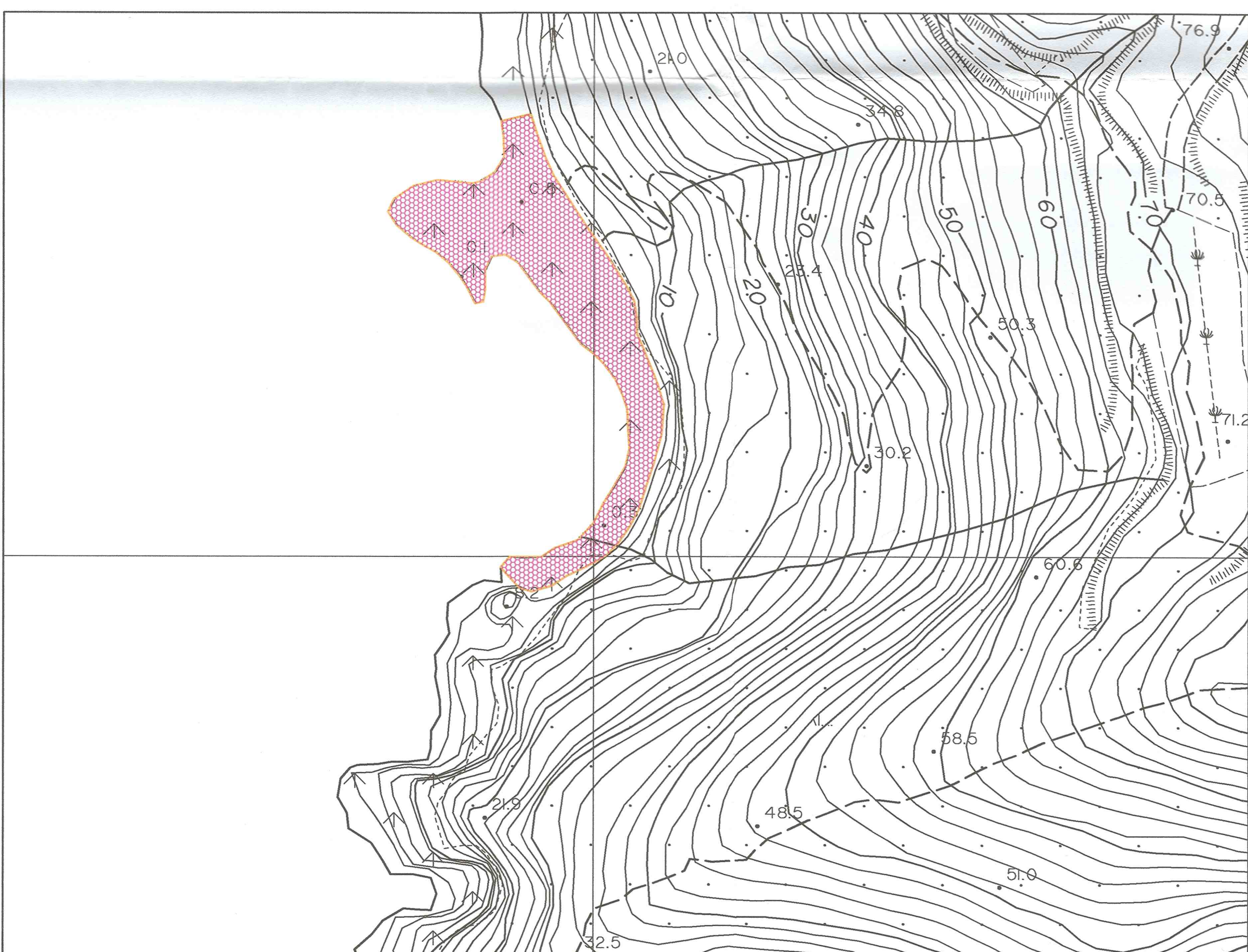
Spiaggia 21 - Sassi verdi



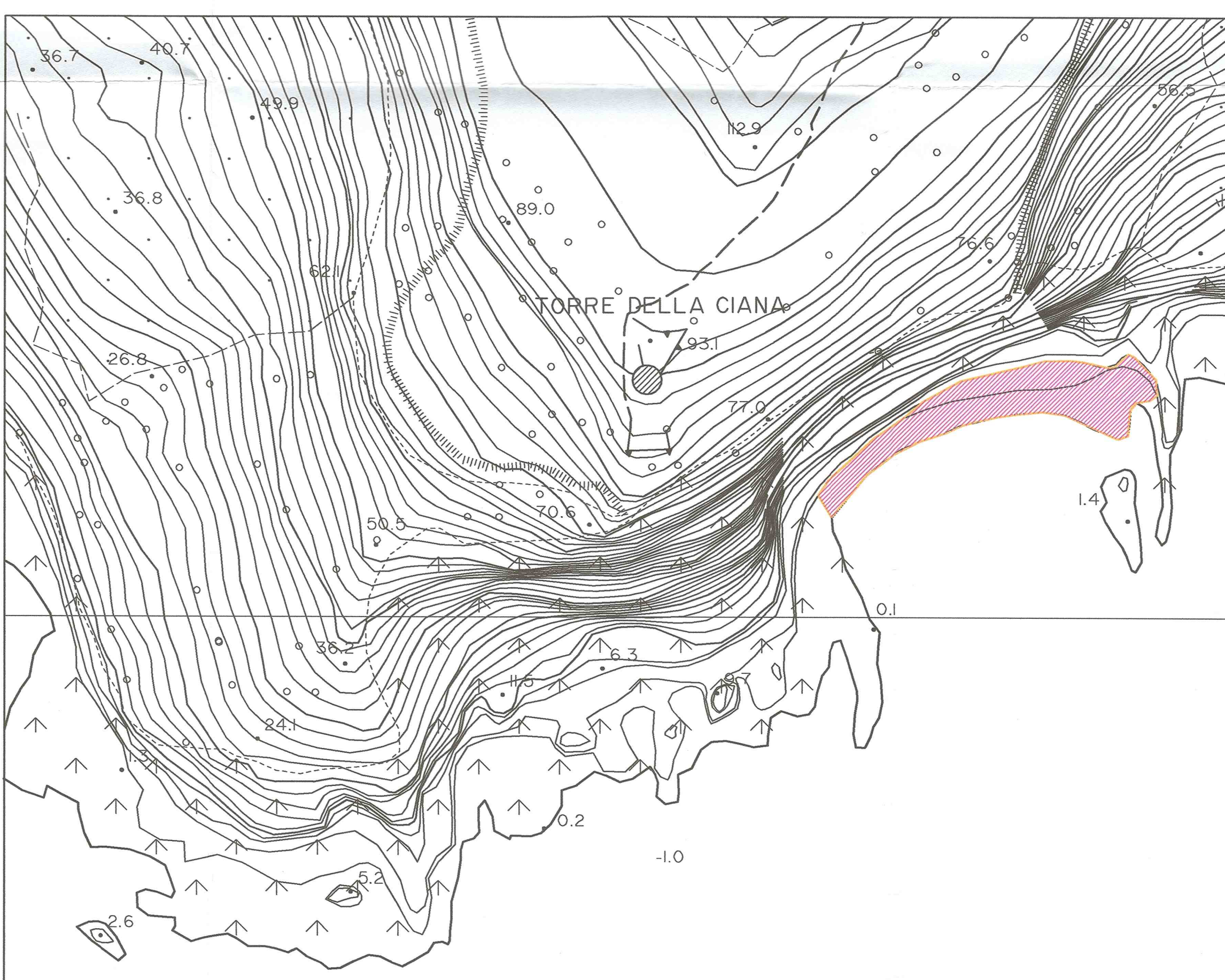
Spiaggia 22 - Mar Morto



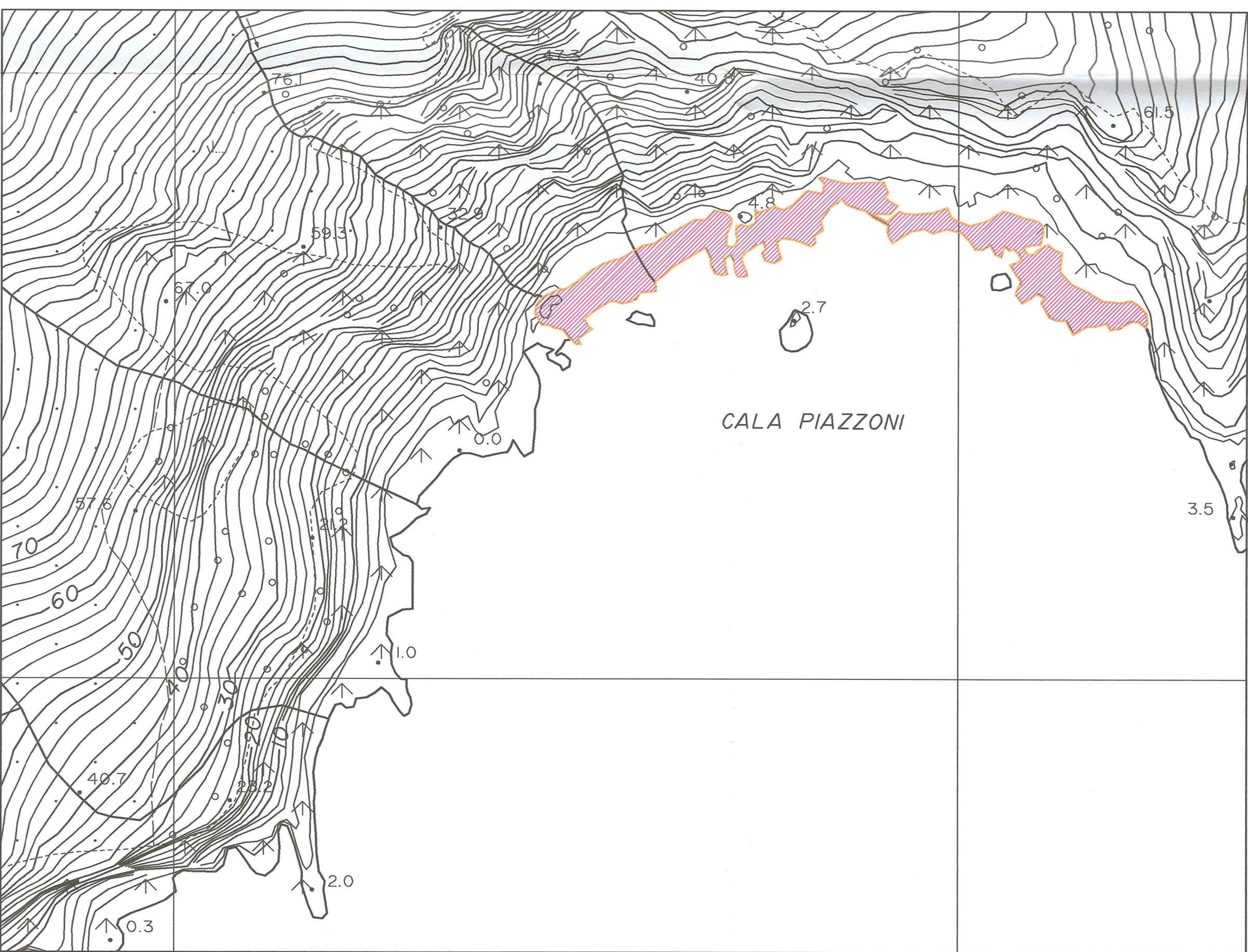
Spiaggia 23 - Le Cannelle



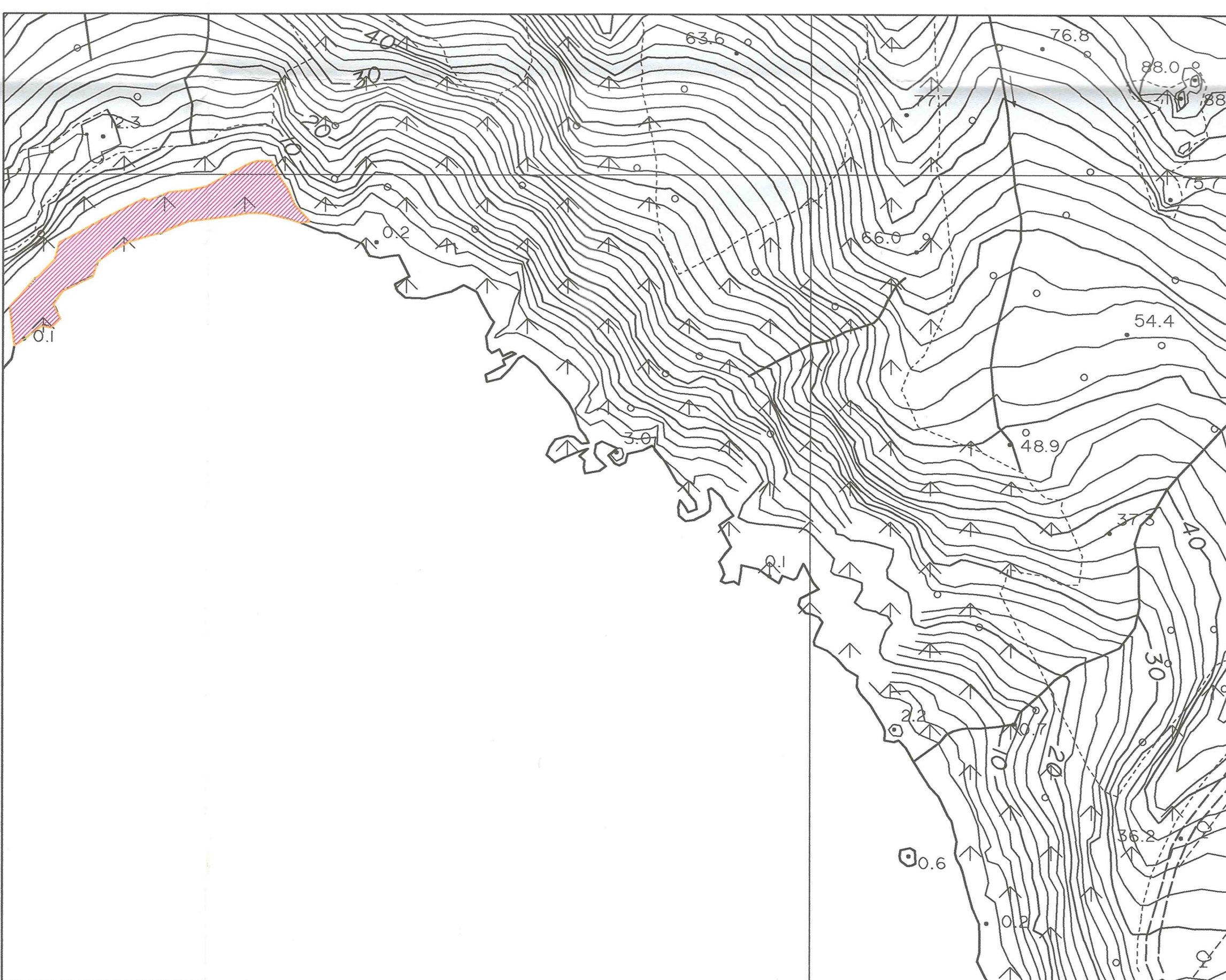
Spiaggia 24 - Purgatorio



Spiaggia 25 - Ciana



Spiaggia 26 - Cala piazzoni



Spiaggia 27 - Ficaie

Scala 1:1.000